

# Public Meeting - Draft EIR/EIS

---

## El Camino Real Roadway Renewal

*July 14, 2021 (virtual)*

*July 16, 2021 (in-person)*

# Welcome

## Goals for Today's Meeting

### **CALTRANS PRESENTATION**

- Overview of the project
- Introduction to Draft Environmental Document

### **QUESTION & ANSWER SESSION**

- Answer questions and get feedback from our audience

# Asking Questions During Q&A

- Type your questions into the Q&A feature
- Call or text Alejandro directly with your questions: 510.385.6856



# How to Submit Comments



## US Mail

Yolanda Rivas, Senior Environmental Planner  
Caltrans District 4  
PO Box 23660, MS 8B  
Oakland, CA 94623-0660



## Email

[ECRProject@dot.ca.gov](mailto:ECRProject@dot.ca.gov)



## Online Comment Form

**August 2, 2021**

Is the last day to  
submit comments

# Presentation Topics

- Project Overview
- Environmental Document
- What We've Heard
- Project Alternatives
- Environmental Impacts
- Next Steps





# PROJECT OVERVIEW

*Overarching Goals & Purpose*



## OVERARCHING GOALS

- Retain the character and health of the Grove.
- Improve the safety of the roadway and sidewalks.



## Stakeholder Spotlight

### THE EL CAMINO REAL TASK FORCE



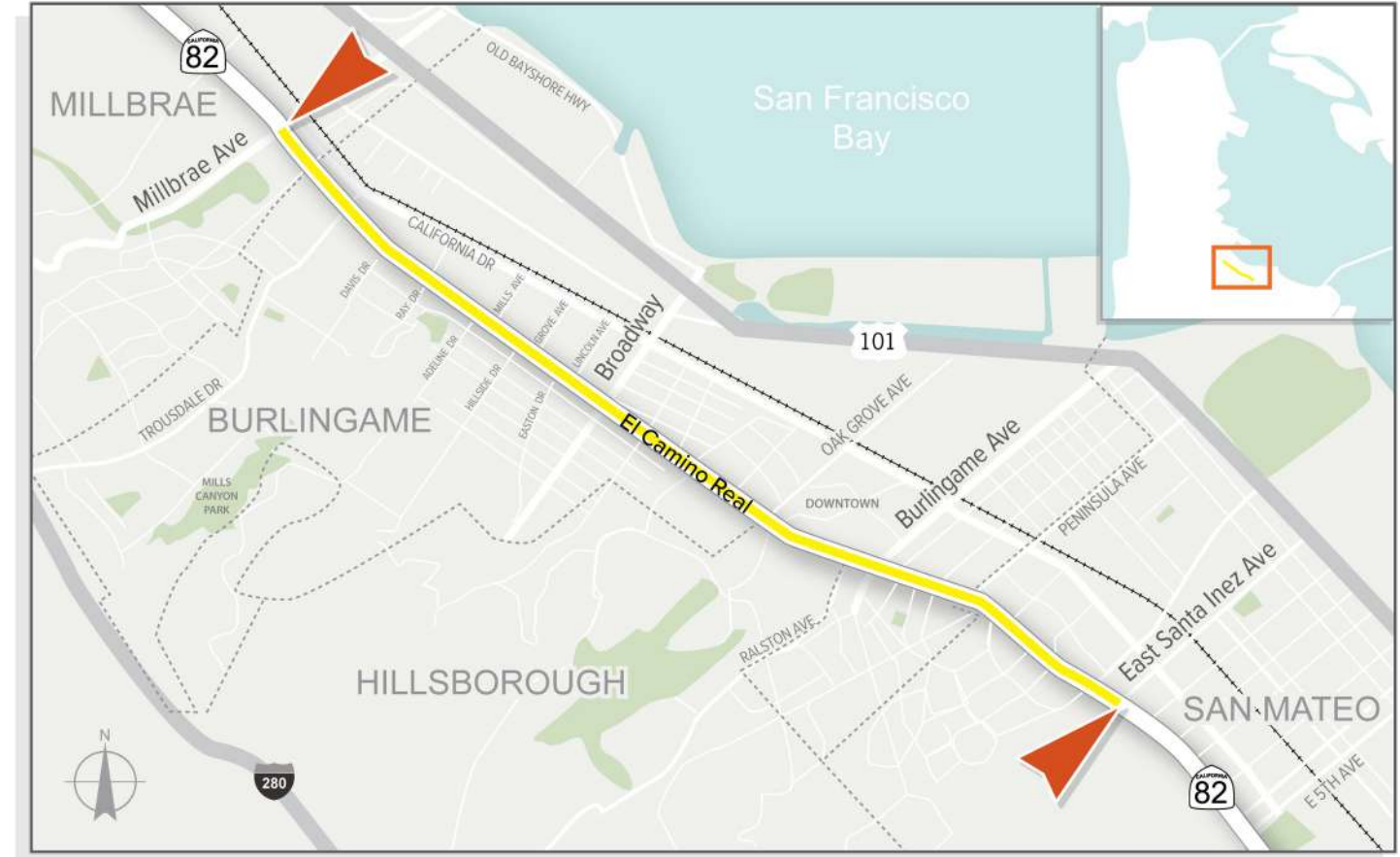
*Since 2017, Caltrans has been collaborating with the El Camino Real (ECR) Task Force through a series of meetings, field visits, and listening sessions.*

### CONCERNS

- Trees
- Roadways
- Sidewalks
- Drainage

## Purpose of this project is to improve:

- Poor pavement condition
- Sidewalks that do not meet ADA standards
- Local drainage/flooding issues
- Crosswalks that need upgrades
- Visibility (Sight Distance)





# Accomplishments

- Community Task Force Study Complete ..... *Spring 2017*
- Educational Meeting ..... *January 2020*
- CA Environmental Quality Act (CEQA) Scoping Meeting ..... *May 26-July 6, 2020*
- National Environmental Policy Act (NEPA) Scoping Meeting .. *Nov 16, 2020-Jan 8, 2021*
- Draft EIR/EIS with Individual 4(f) evaluation..... *June 10-August 2, 2021*
- Draft Environmental Document Meeting..... *July 14 and July 16, 2021*

# What's Next

- Project Design ..... *2022*
- Project Construction ..... *2024*



# ENVIRONMENTAL DOCUMENT

*Environmental Impact Report/Environmental Impact Study (EIR/EIS)*

# What is an Environmental Document?

- Identifies environmental impacts of a proposed project
- Shows compliance with state and federal laws.
- Informs decision of whether to proceed with project

Chapter 4 California Environmental Quality Act (CEQA) Evaluation

425.3 MMT CO<sub>2</sub>e  
2018 TOTAL GHG EMISSIONS

Figure 4.5-2: California 2018 Greenhouse Gas Emissions by Economic Sector (Source: ARB 2020)

Figure 4.6-3: Change in California GDP, Population, and GHG Emissions since 2000 (Source: ARB 2020)

AB 32 required ARB to develop a Scoping Plan that describes the approach California will take to achieve the goal of reducing GHG emissions to 1990 levels by 2020, and to update it every 5 years. ARB adopted the first scoping plan in 2008. The second updated plan, California's 2017 Climate Change Scoping Plan, adopted on December 14, 2017, reflects the 2030 target.

Chapter 3 Affected Environment, Environmental Consequences, and Cumulative Impacts, Mitigation, and Monitor Measures

Chapter 3 Affected Environment, Environmental Consequences, and Cumulative Impacts, Mitigation, and Monitor Measures

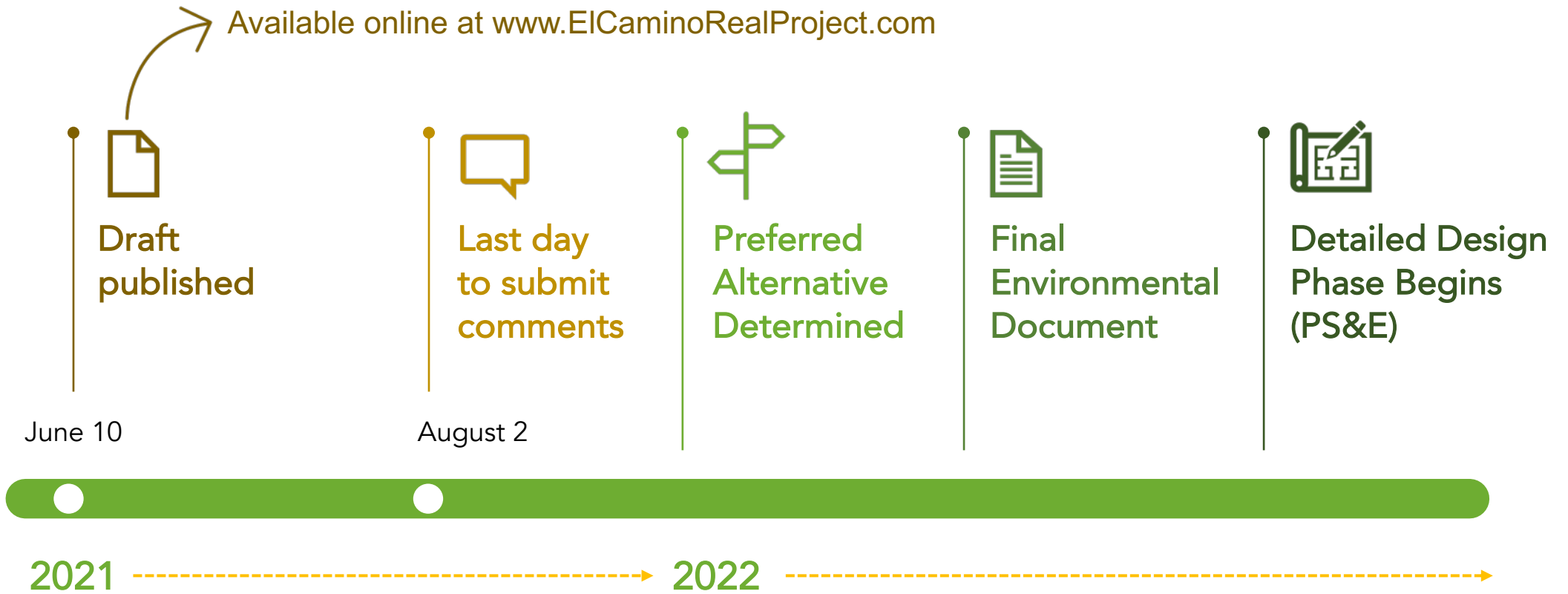
**Scoping Plan Table**

Scenario	Population (2030)	GDP (2030)	GHG Emissions (2030)	GHG Emissions per Capita (2030)	GHG Emissions per GDP (2030)
2008	38.0	180.0	100.0	2.63	0.0146
2017	39.0	240.0	70.0	1.79	0.0075
2020	40.0	280.0	50.0	1.25	0.0045
2025	41.0	320.0	40.0	0.98	0.0031
2030	42.0	360.0	30.0	0.71	0.0020



Available online at  
[www.EICaminoRealProject.com](http://www.EICaminoRealProject.com)

# Environmental Milestones



# How to Submit Comments



## US Mail

Yolanda Rivas, Senior Environmental Planner  
Caltrans District 4  
PO Box 23660, MS 8B  
Oakland, CA 94623-0660



## Email

[ECRProject@dot.ca.gov](mailto:ECRProject@dot.ca.gov)



## Online Comment Form

**August 2, 2021**

Is the last day to  
submit comments



# What Will Happen with Comments

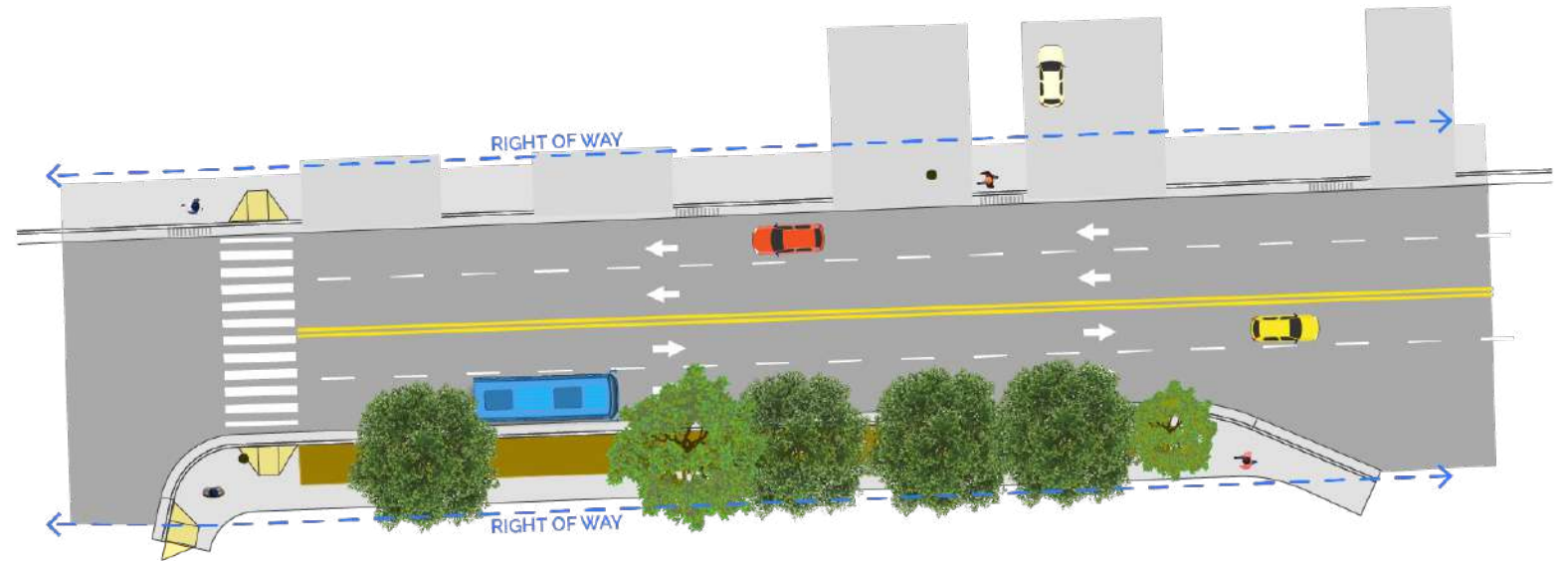
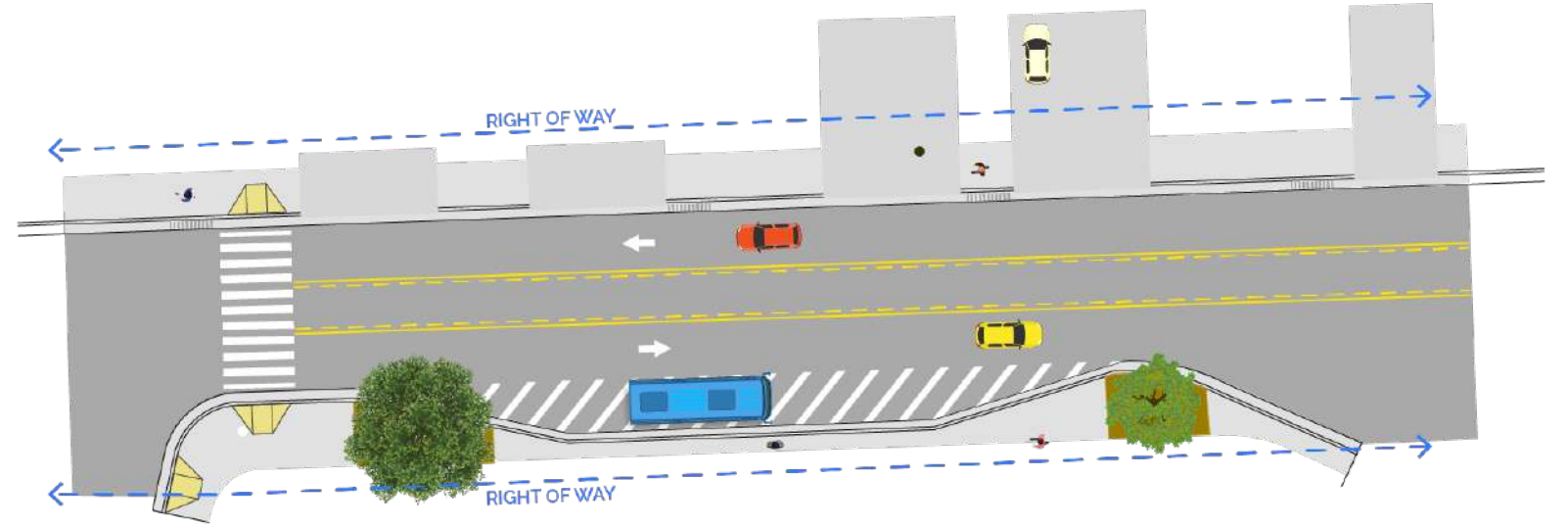
- Comments will be reviewed by Caltrans staff
- Comments that address an issue or pose a question about the DED will be addressed in the Final Environmental Document





**WE HEARD YOU**

# Road Diet





Bike lane



# Planting Areas

Trees between sidewalk and road (we're looking into this)



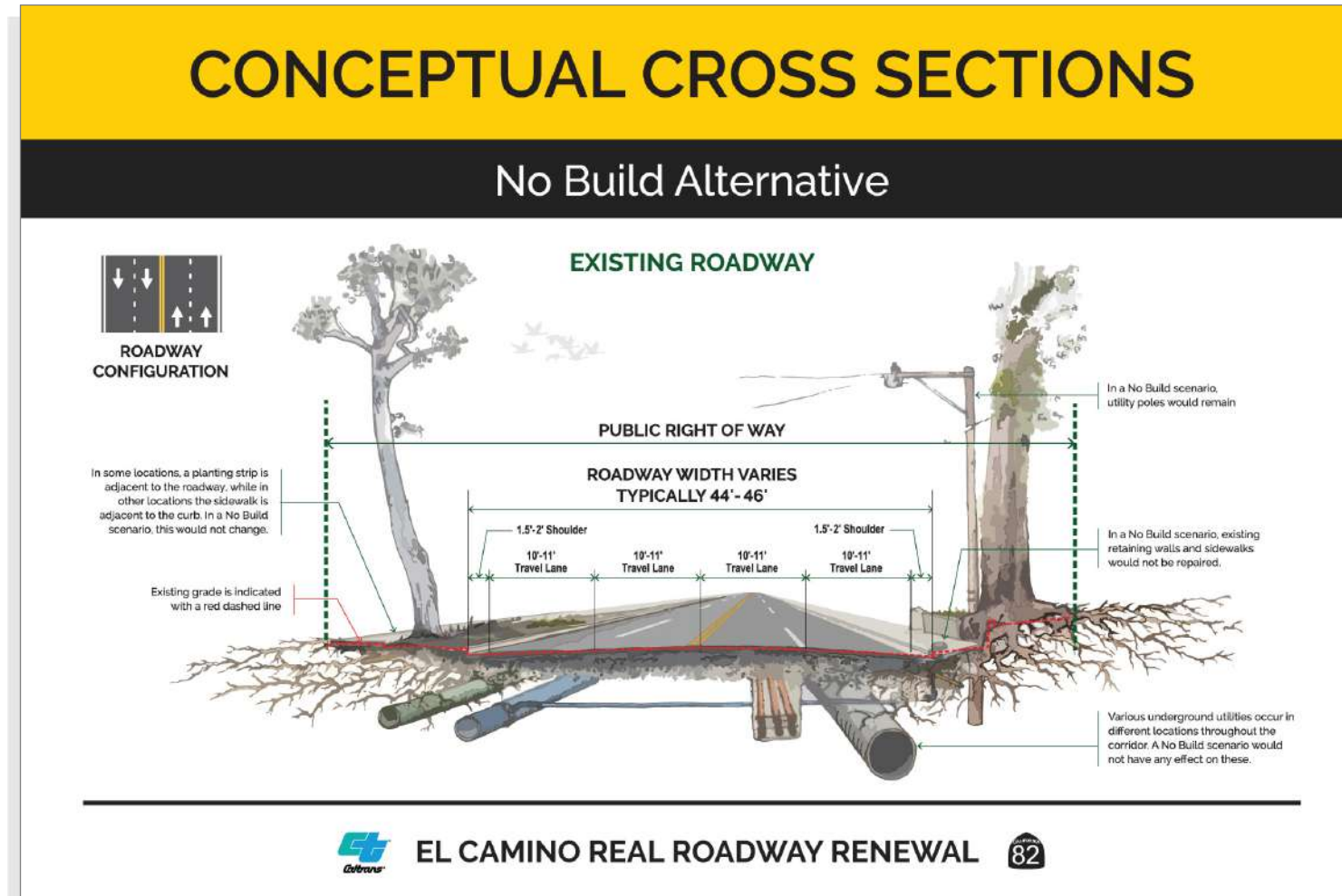




# PROJECT ALTERNATIVES

*Proposed Designs*

# No Build Alternative



# Build Alternative: Roadway Rehabilitation

## CONCEPTUAL CROSS SECTIONS

### Build Alternative: Roadway Rehabilitation



## CONCEPTUAL CROSS SECTIONS

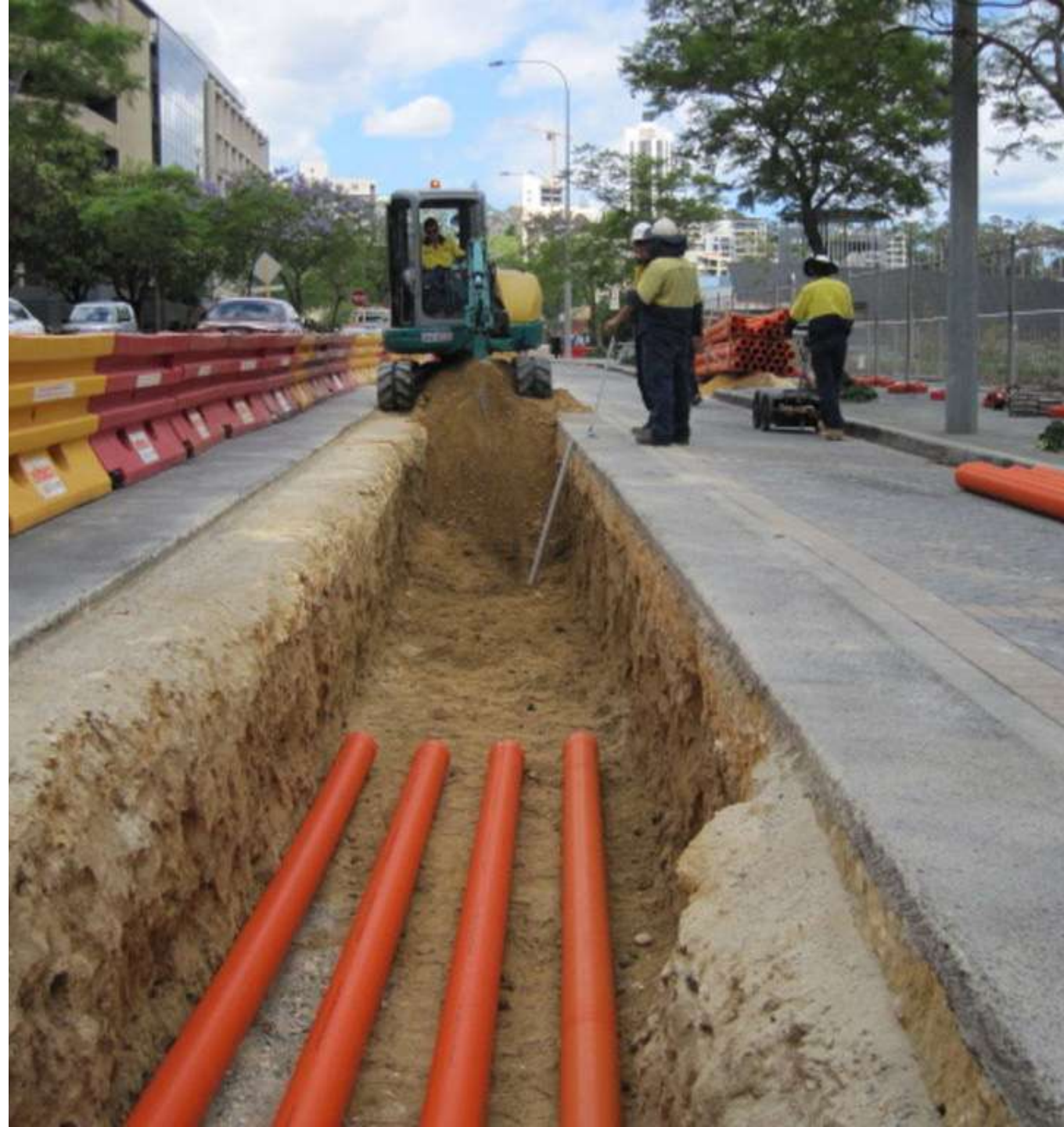
### Build Alternative: Roadway Rehabilitation





# Utility Undergrounding

Utility undergrounding efforts are being funded, lead, and coordinated by the City of Burlingame.



# Types/Categories of Environmental Impacts





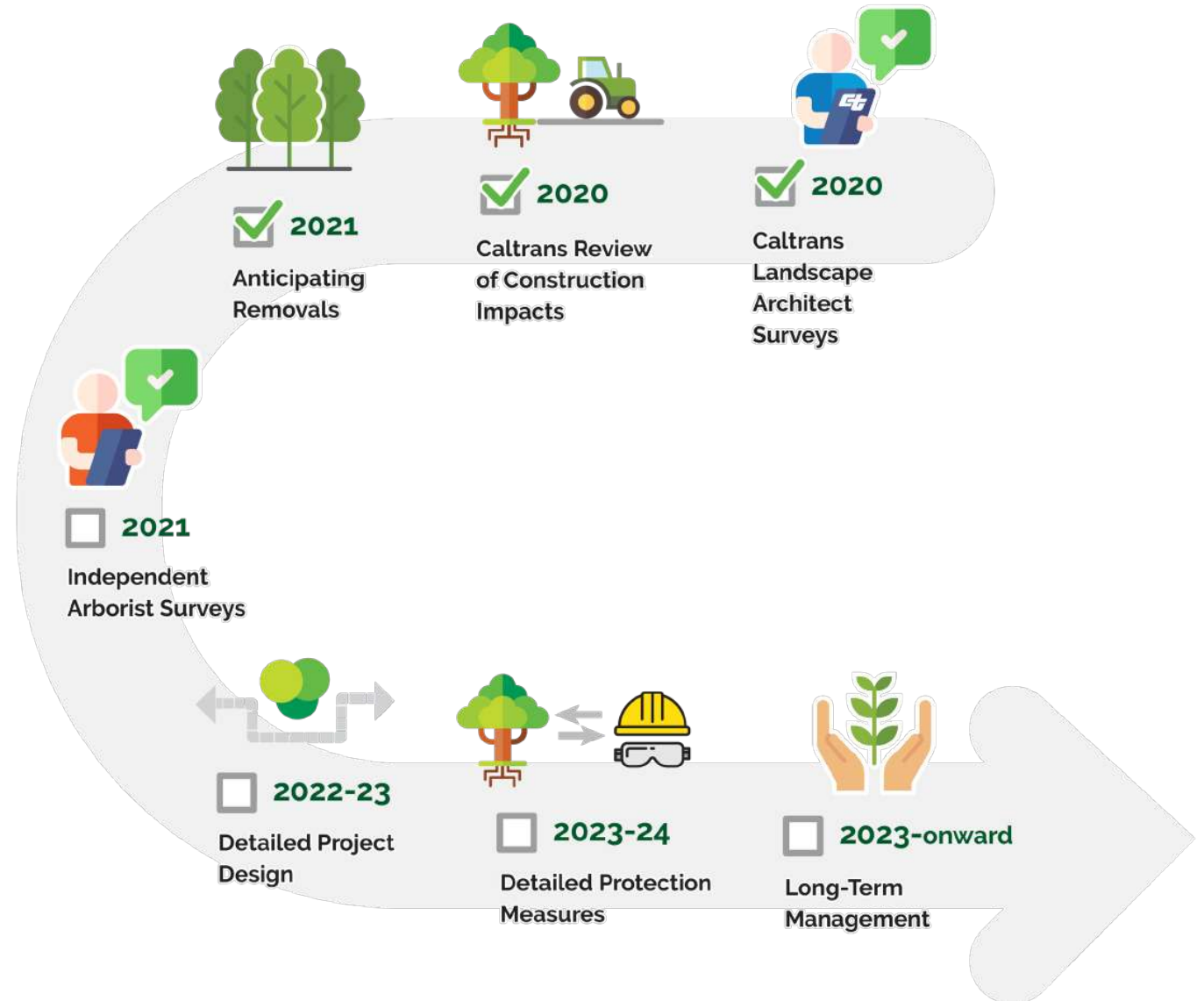


# VISUAL & CULTURAL IMPACTS

*Understanding Impacts to the Tree Rows*

# Tree Assessment

- How do we determine which trees to remove?
- Which we can keep?
- How will we protect and maintain those?





# Caltrans Landscape Architecture Tree Surveys

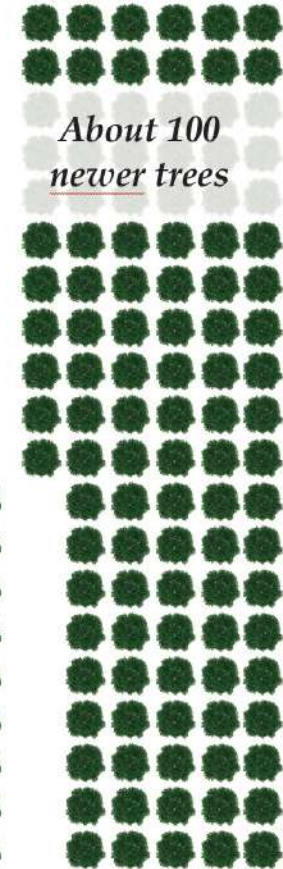
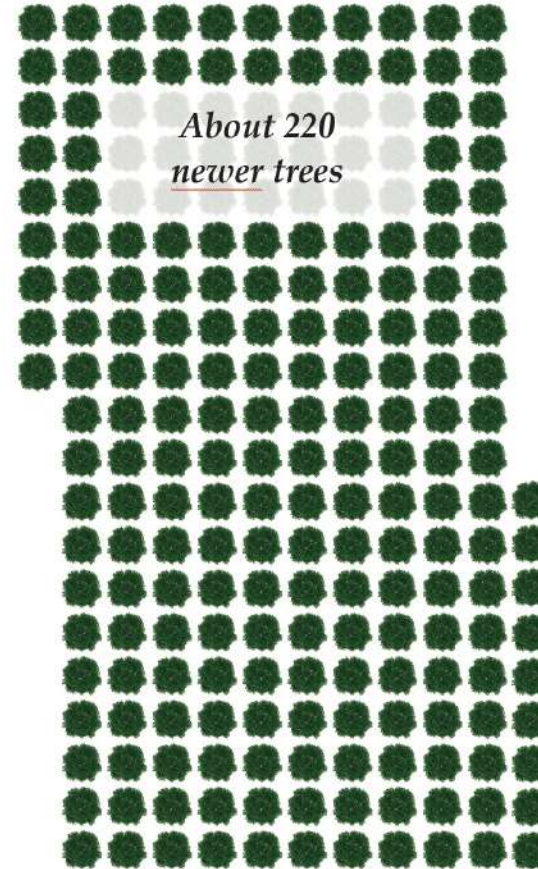
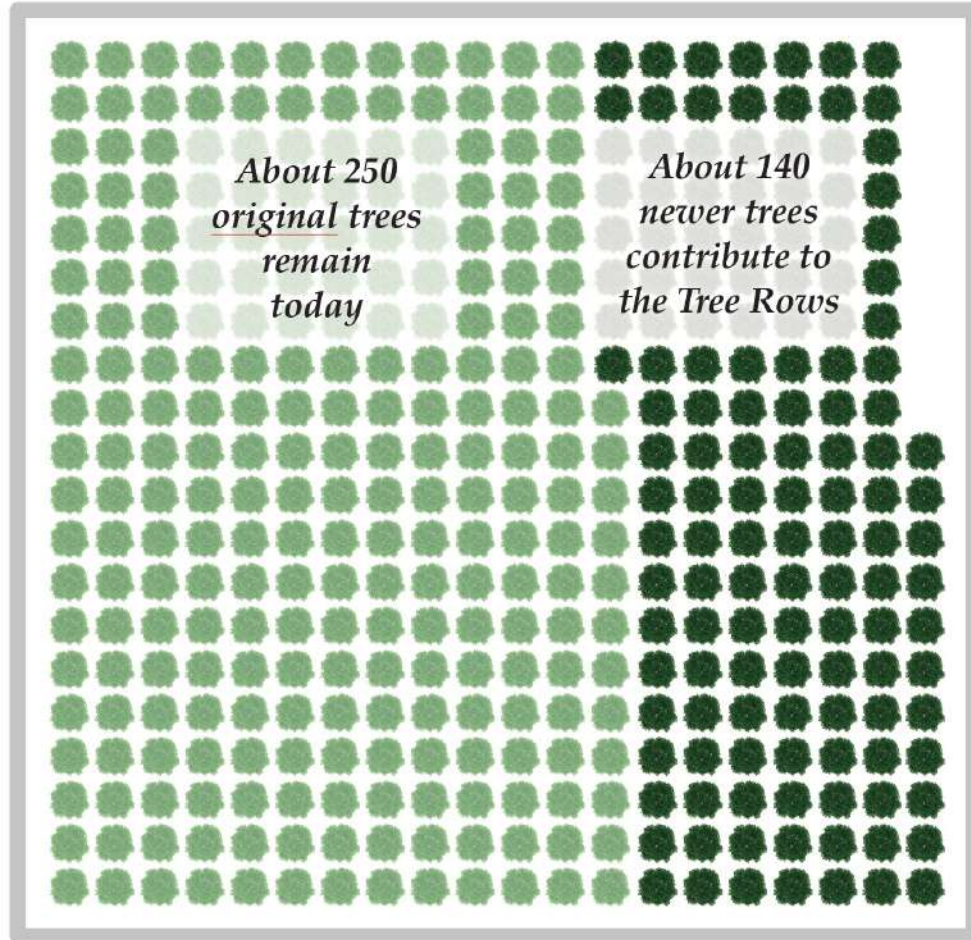
- Over 600 trees surveyed
- Type, size, and health indicators





# Existing Trees: Quantities and Categories

## Howard-Ralston Eucalyptus Tree Rows

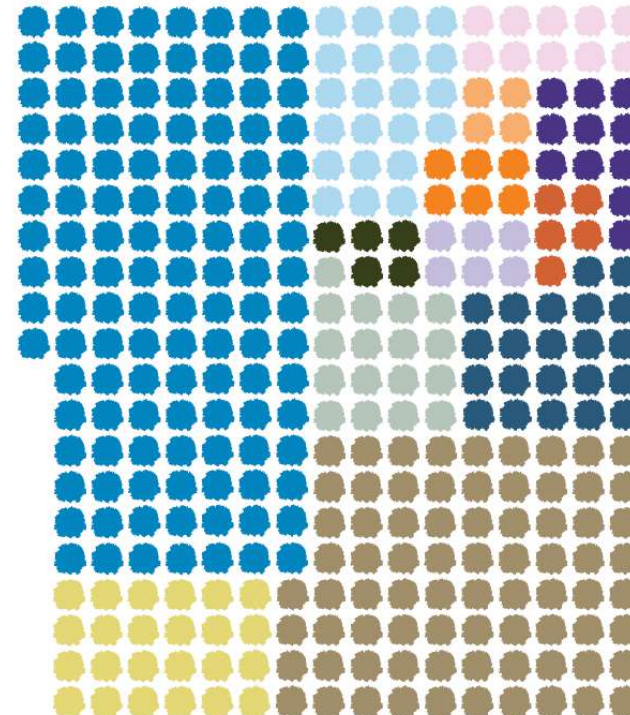
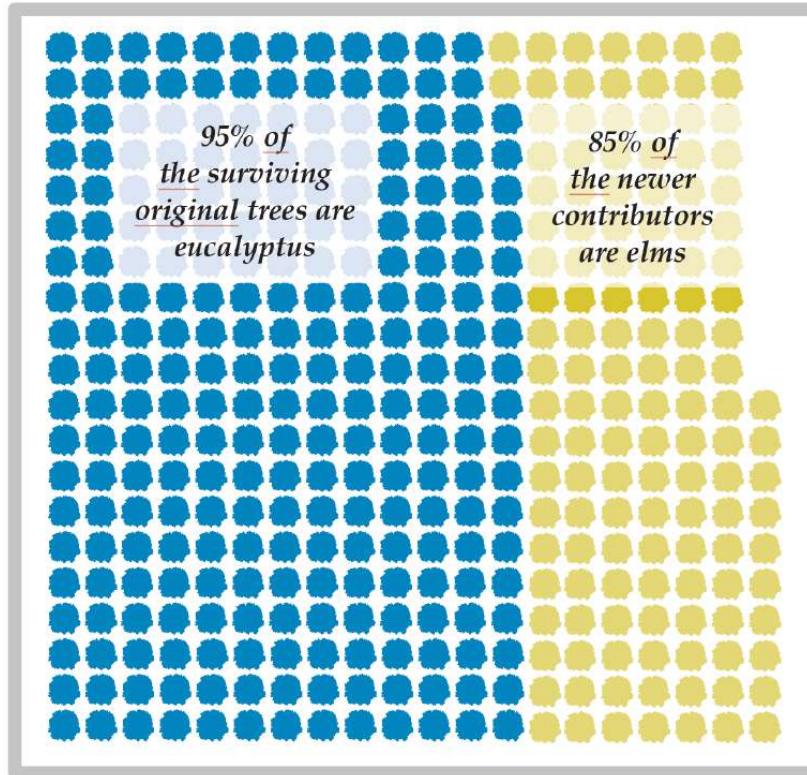


About 390 trees between Peninsula Avenue and Ray Drive contribute to the Tree Rows.



# Existing Trees: Varieties

Howard-Ralston Eucalyptus Tree Rows



EUCALYPTUS AND ELMS ARE MOST COMMON, BUT MORE THAN A DOZEN VARIETIES EXIST

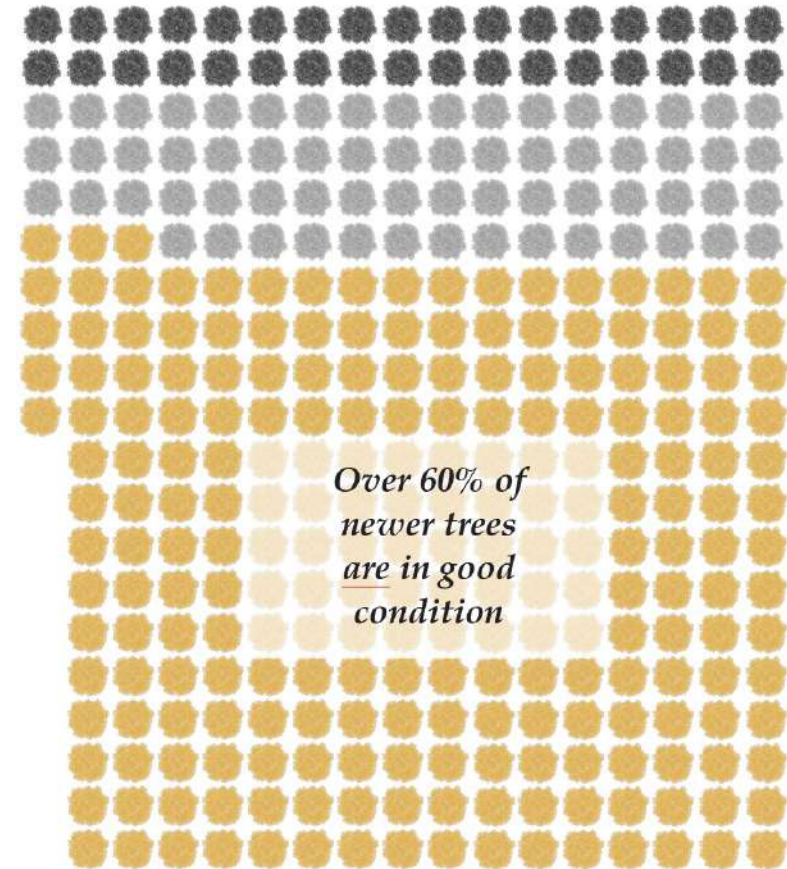
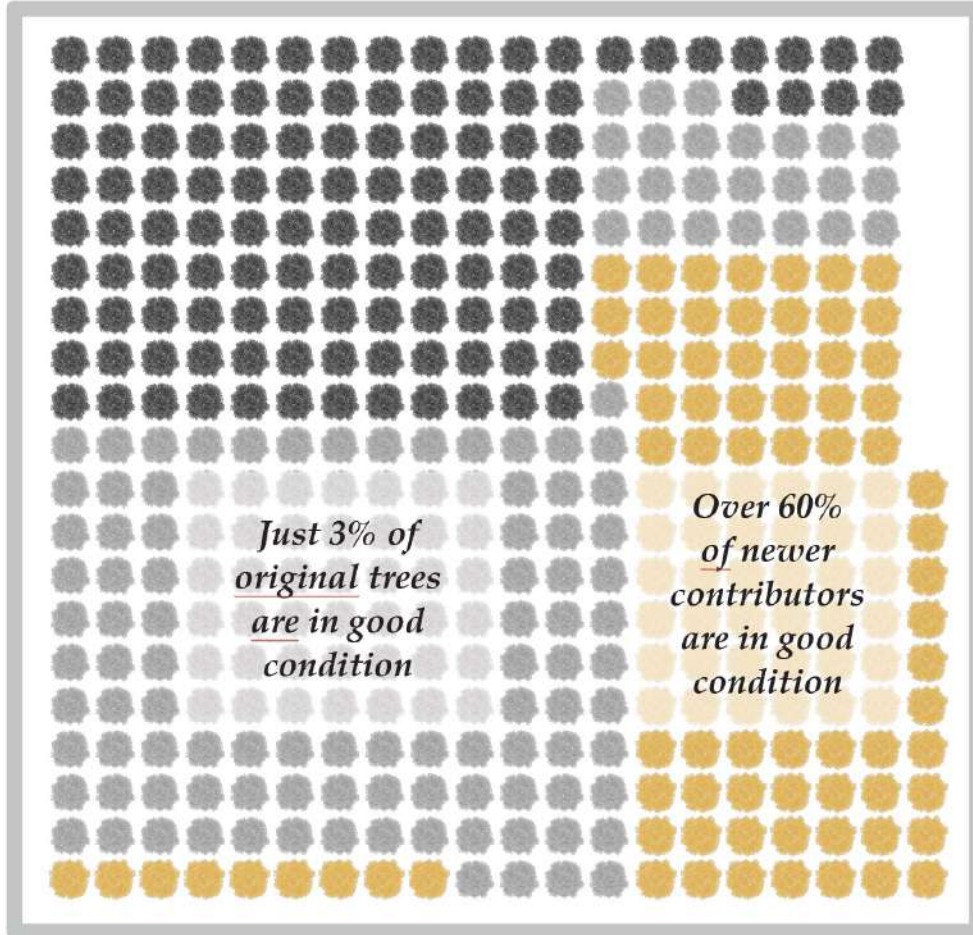
- Eucalyptus (53%)
- Sycamore (3%)
- California buckeye (0.8%)
- Juniper (0.7%)
- Elm (22%)
- Acacia (2%)
- Coast redwood (1.5%)
- Coast live oak (0.8%)
- Liquidambar (3%)
- Pine (1.4%)
- Magnolia (0.7%)
- Cedar (0.6%)
- Other, or undetermined (11%)



# Existing Trees: Condition

HEALTH & STRUCTURE DETERMINE “CONDITION”

Howard-Ralston Eucalyptus Tree Rows



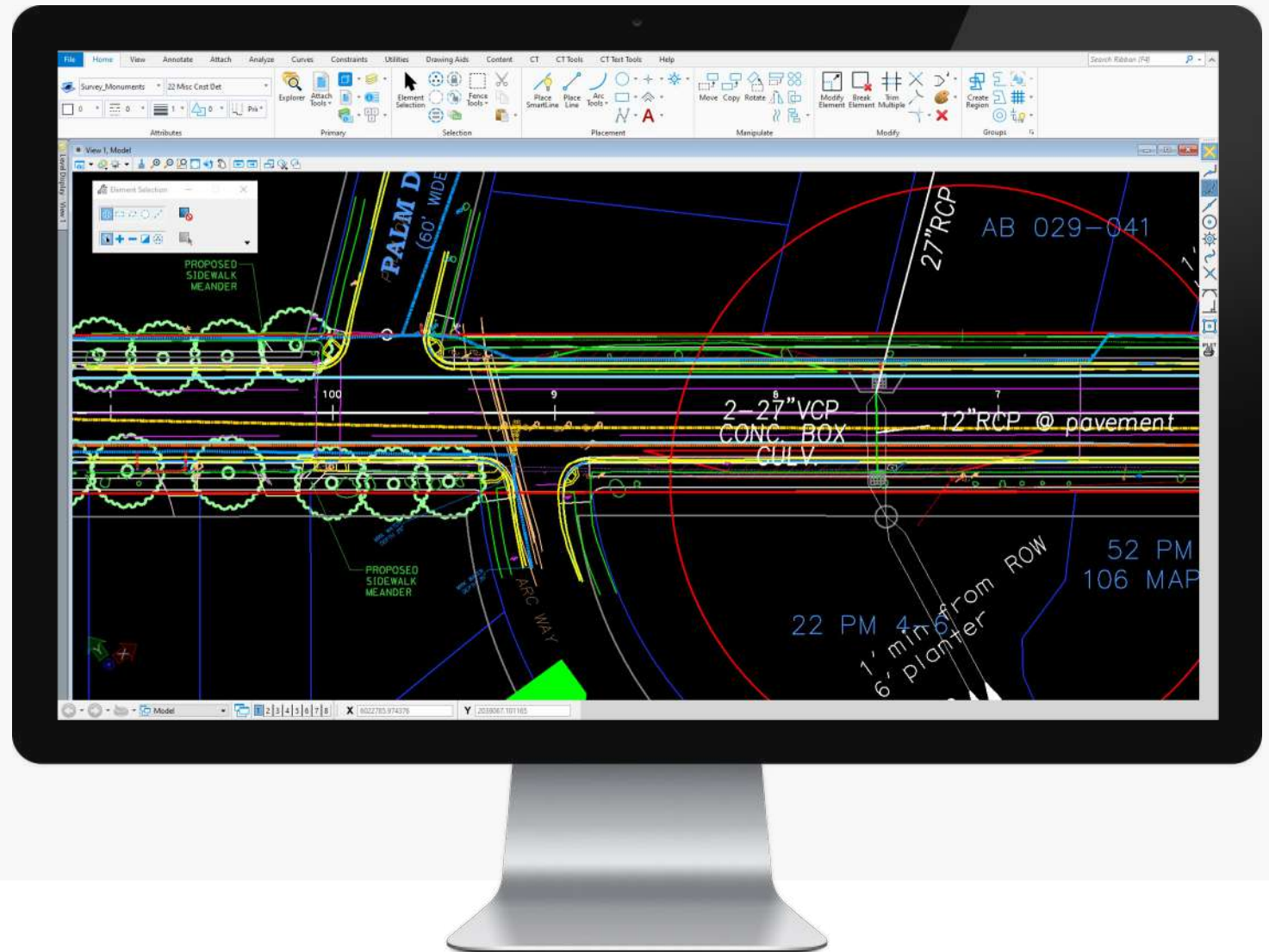
Good

Fair

Poor

# Mapping Overlay of Trees and Project Features

- Excavation is needed to make repairs
- Excavation can damage roots
- We mapped the proposed work to see which trees will be most affected





# Independent Arborist Surveys

- Checking conclusions of the Visual Survey
- Identify best candidates for retention

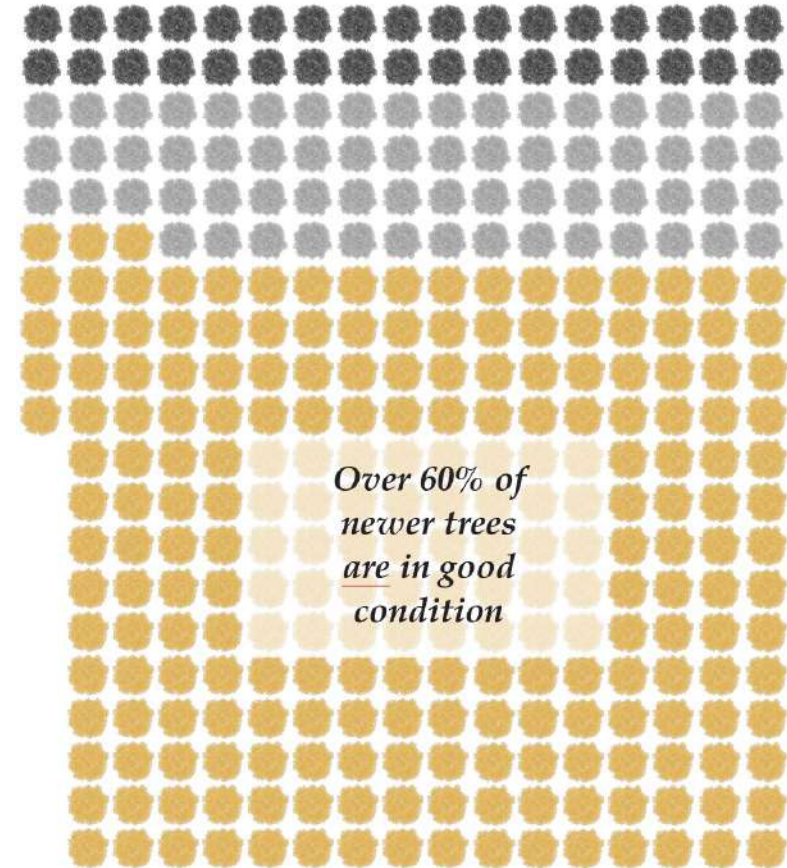
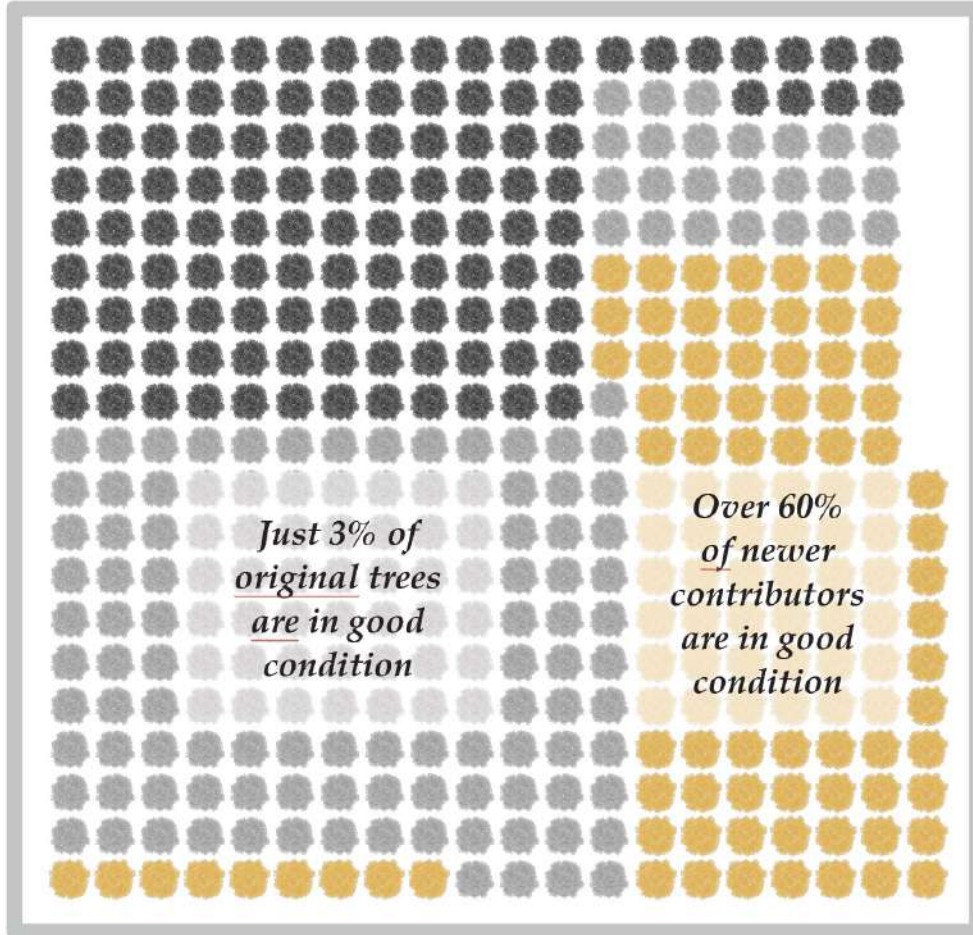




# Tree Condition

TREES IN BETTER CONDITION ARE MORE RESILIENT

Howard-Ralston Eucalyptus Tree Rows



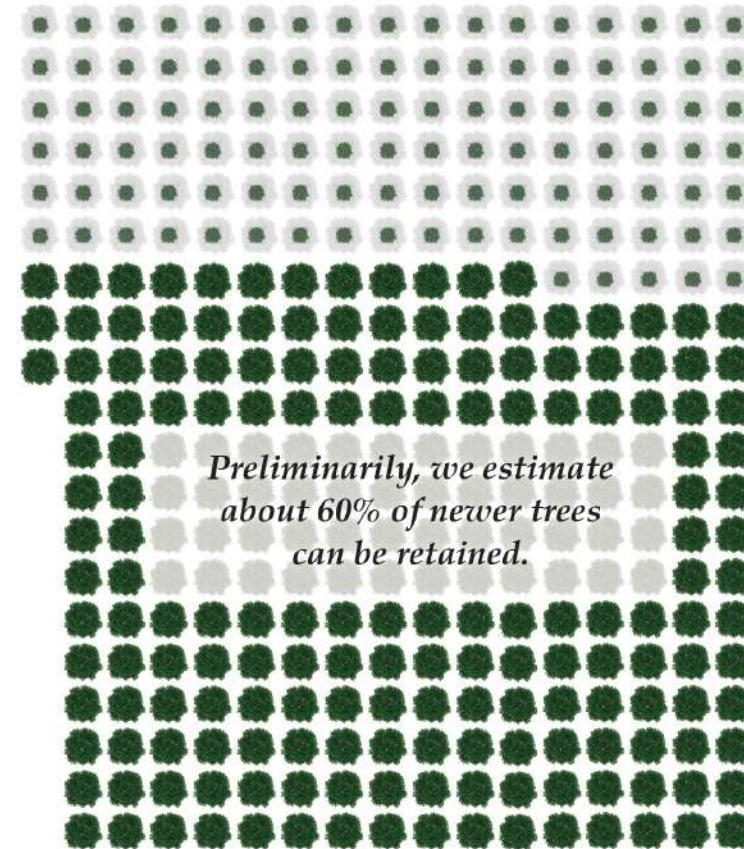
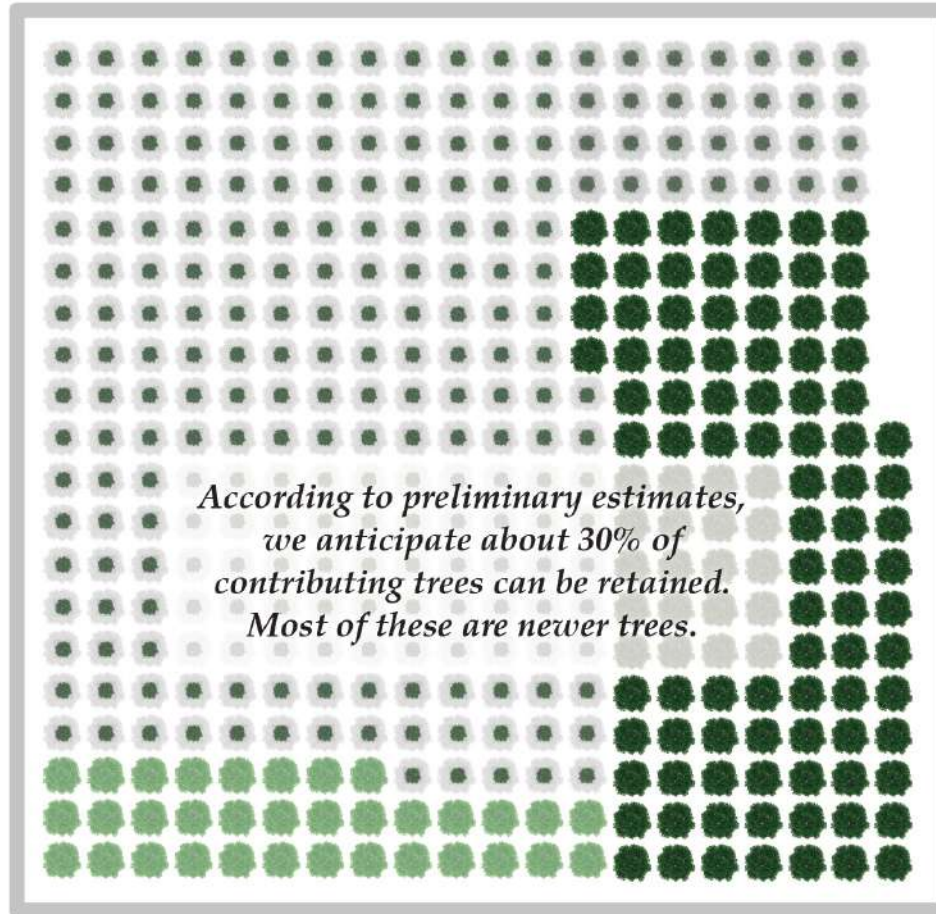
Good

Fair

Poor

# Tree Removals & Replacements

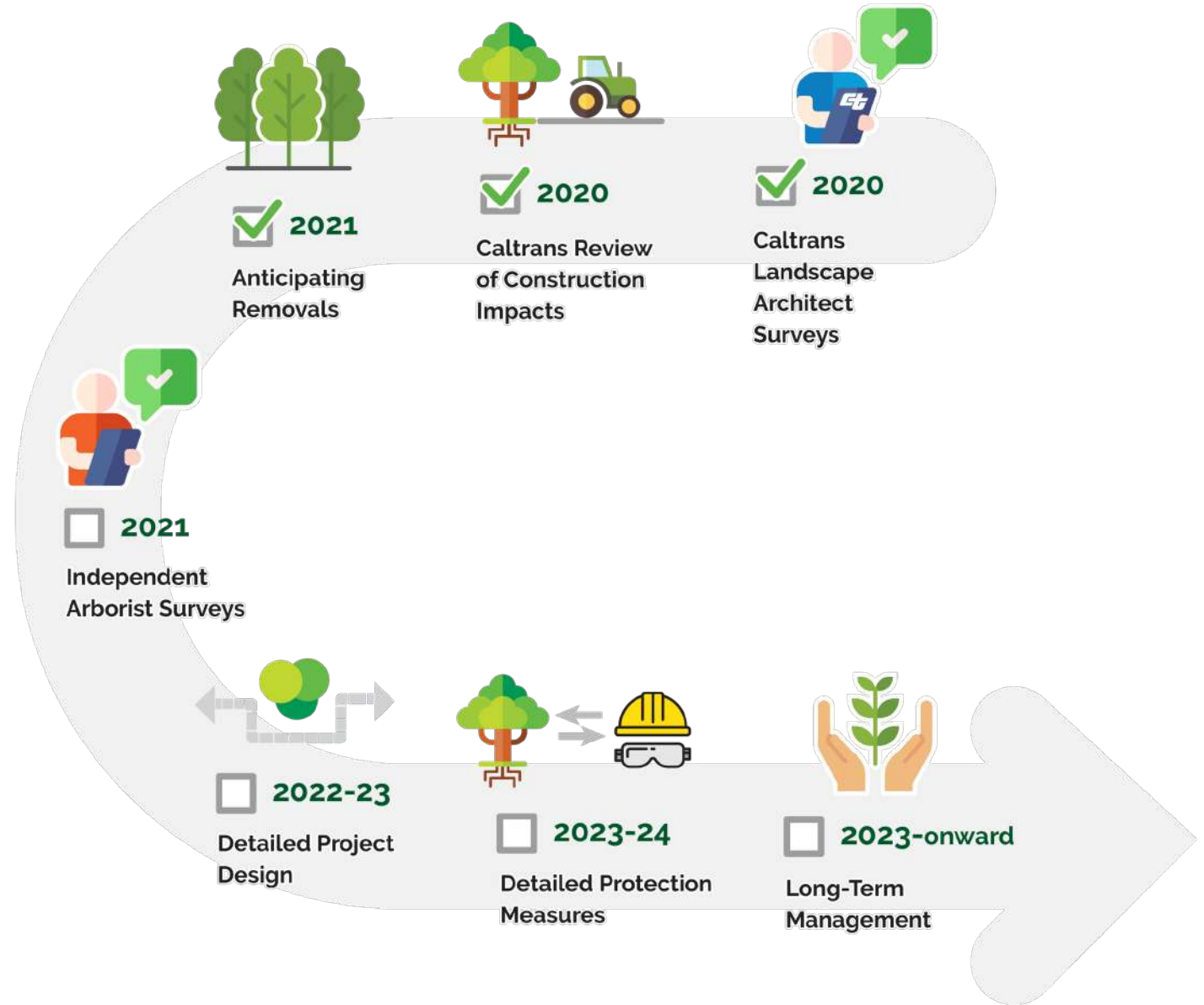
## Howard-Ralston Eucalyptus Tree Rows



- Original Tree to Be Retained
- Newer Tree to Be Retained
- Removals & Replacements



# Protecting Trees Moving Forward





# SIMULATIONS

*Visual Resource Change*

# Simulations

## 3 Locations

- Hillside Drive
- Forest View Avenue
- Carol Ave/Cypress Ave/  
Bayswater Ave/Primrose Rd

## 3 Views of Each Location

- No Build Alternative
- Build Alternative
  - *Underground utilities*
- Build Alternative
  - *Aboveground utilities*





# No Build Alternative: Existing Conditions at Hillside Drive





# Build Alternative: Roadway Rehab – Underground Utilities Option



Approximately 20 years post-construction.



## Build Alternative: Roadway Rehab – Underground Utilities Option



Approximately 20 years post-construction.



# Build Alternative: Roadway Rehab – Aboveground Utilities Option



Approximately 20 years post-construction.



# No Build Alternative: Existing Conditions at Forest View Ave





# Build Alternative: Roadway Rehab – Underground Utilities Option



Approximately 20 years post-construction.



# Build Alternative: Roadway Rehab – Aboveground Utilities Option



Approximately 20 years post-construction.



# No Build Alternative: Existing Conditions at Carol Ave





# Build Alternative: Roadway Rehab - Underground Utilities Option



Approximately 20 years post-construction.



# Build Alternative: Roadway Rehab - Aboveground Utilities Option



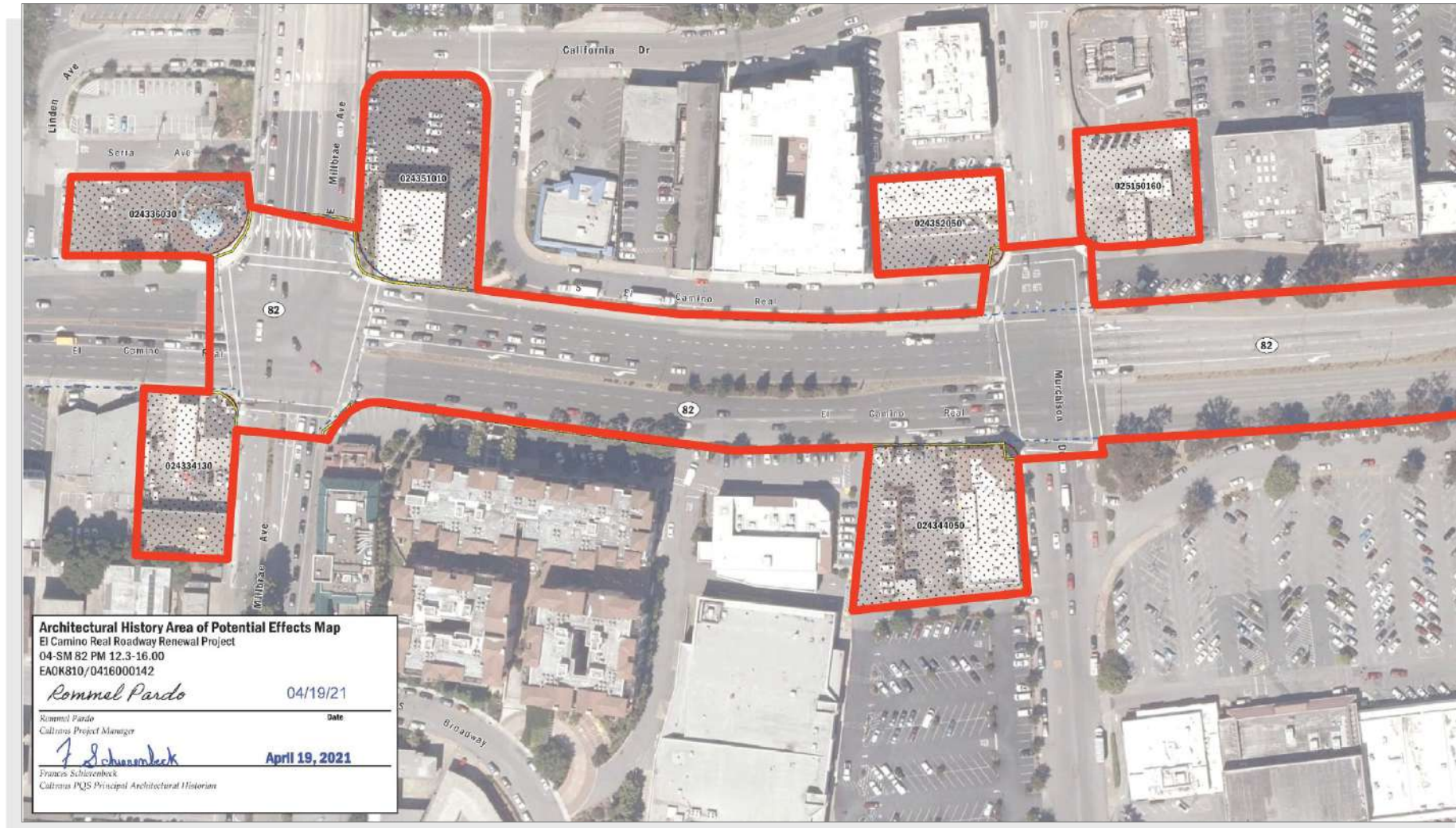
Approximately 20 years post-construction.





# Cultural Resources

# Cultural Resources - Area of Potential Effects



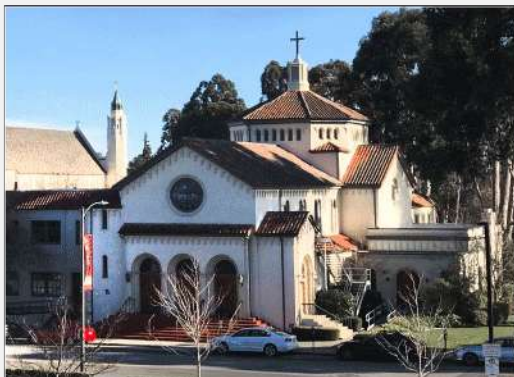


# Cultural Resources – Identification

## Archeological Survey Report (ASR) & Extended Phase One Study (XPI)

- Conducted to identify archaeological resources within the Area of Potential Effects
  - *Completed in July 2019 and August 2020*
  - *No archeological sites were found within the project limits*





# Cultural Resources

## IDENTIFICATION

### Historic Resources Evaluation Report (HRER)

- Examines built cultural resources for historical significance
  - *Completed in July 2020.*



# Cultural Resources

## EFFECTS

### **Finding of Effects (FOE) Report**

- Analyzes project effects to eligible cultural resources.
  - *Report to be finalized October 2021.*
- Preliminary analysis shows a likely adverse effect to the Tree Rows and three other historic properties.



# Cultural Resources

## RESOLVING ADVERSE EFFECTS

### Memorandum of Agreement (MOA)

- Outlines mitigation to resolve adverse effects to cultural resources.
  - *We anticipate it will be finalized in January 2022.*



# Cultural Resources

## RESOLVING ADVERSE EFFECTS



### Technical Preservation Services

National Park Service  
U.S. Department of the Interior

[About](#)[The Standards](#)[Tax Incentives](#)[How To Preserve](#)[Sustainability](#)[Historic Surplus Property](#)[Education & Training](#)[Hot Topics](#)

[Home](#) > [The Standards](#)



### The Secretary of the Interior's Standards for the Treatment of Historic Properties

The Secretary of the Interior's Standards for the Treatment of Historic Properties are common sense historic preservation principles in non-technical language. They promote historic preservation best practices that will help to protect our nation's irreplaceable cultural resources.

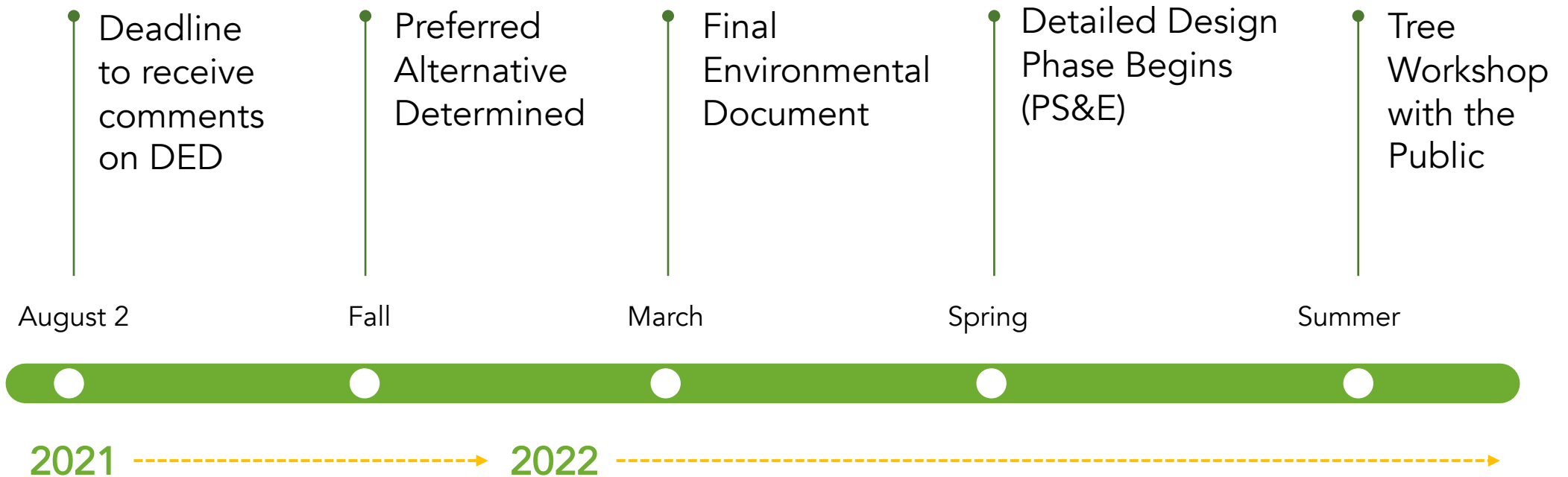




THANK YOU



# Here is what's ahead



Your thoughts are important to us!  
Please send us your comments  
by **August 2, 2021.**

# Thank You!

*Alternative formats of our materials can be requested through Alejandro Lopez at 510.385.6856.*



## US Mail

Yolanda Rivas, Senior Environmental Planner  
Caltrans District 4  
PO Box 23660, MS 8B  
Oakland, CA 94623-0660



## Email

[ECRProject@dot.ca.gov](mailto:ECRProject@dot.ca.gov)



## Online Comment Form